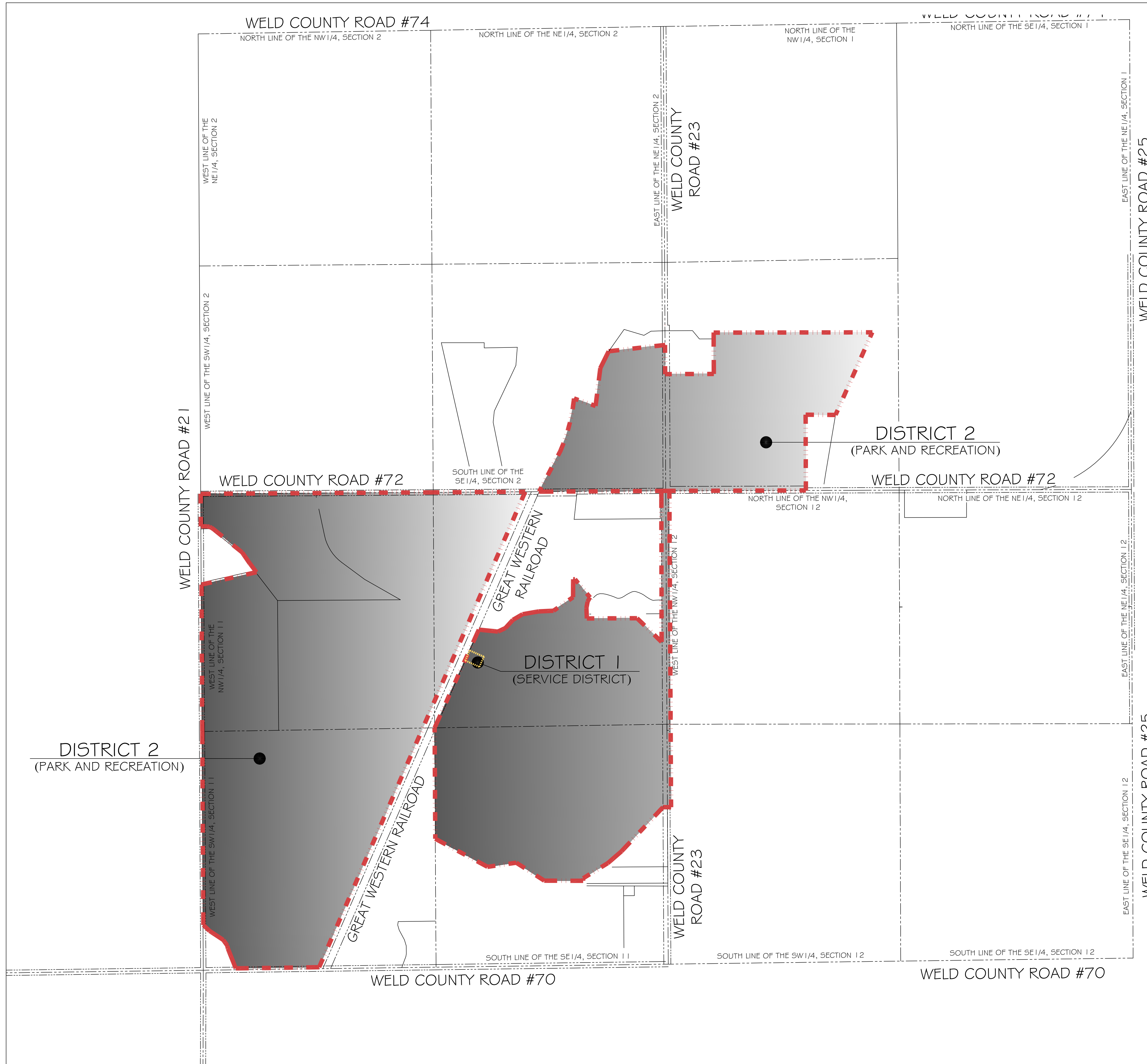


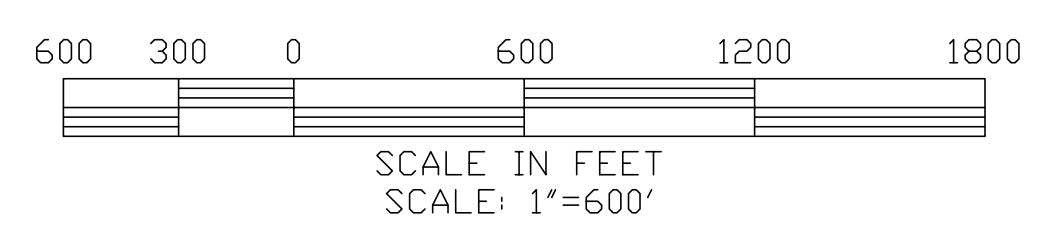
SEVERANCE PARK AND RECREATION DISTRICT 1-2

BEING PORTIONS OF SECTION 1, SECTION 2, SECTION 11, AND SECTION 12, TOWNSHIP 6 NORTH, RANGE 67 WEST OF THE 6TH P.M.,
COUNTY OF WELD, STATE OF COLORADO

DATE: 5/4/2006
FILE NAME: 2006202_MAP2
SCALE: 1"=600'
DRAWN BY: KRG
CHECKED BY: SAL



LEGEND	
DISTRICT 1	
DISTRICT 2	
DISTRICT NUMBER	
DISTRICT ACREAGES	
DISTRICT 1 - 21,875 sq.ft. 0.502 acres	
DISTRICT 2 - 25,161,854 sq.ft. 577.637 acres	
SEVERANCE PARK AND RECREATION DISTRICT 1-2	
DISTRICT MAP	



KING SURVEYORS, INC.
650 Garden Drive | Windsor, Colorado 80550
phone: (970) 686-5011 | fax: (970) 686-5821



REVISIONS:	DATE:
REVISE DISTRICT AND MAP STRUCTURE	5-19-06
ADDRESS COMMENTS	5-25-06
REVISE SERVICE/COMMERCIAL DISTRICT	6-26-06
REVISE FUTURE INCLUSION DISTRICT AREA	9-11-06
UPDATE RECREATION DISTRICT BOUNDARY	9-13-06

SEVERANCE PARK AND RECREATION
DISTRICT 1-2
EVERETT COMPANIES
3030 S. COLLEGE AVENUE, FORT COLLINS, CO 80525
PHONE: (970) 226-1500 FAX: (970) 223-4156

PROJECT #:
2006202

C:\2006202\severance\RECREATION DISTRICT MAP 2.dwg, 8/13/2006 10:53:33 AM, 1/1/06