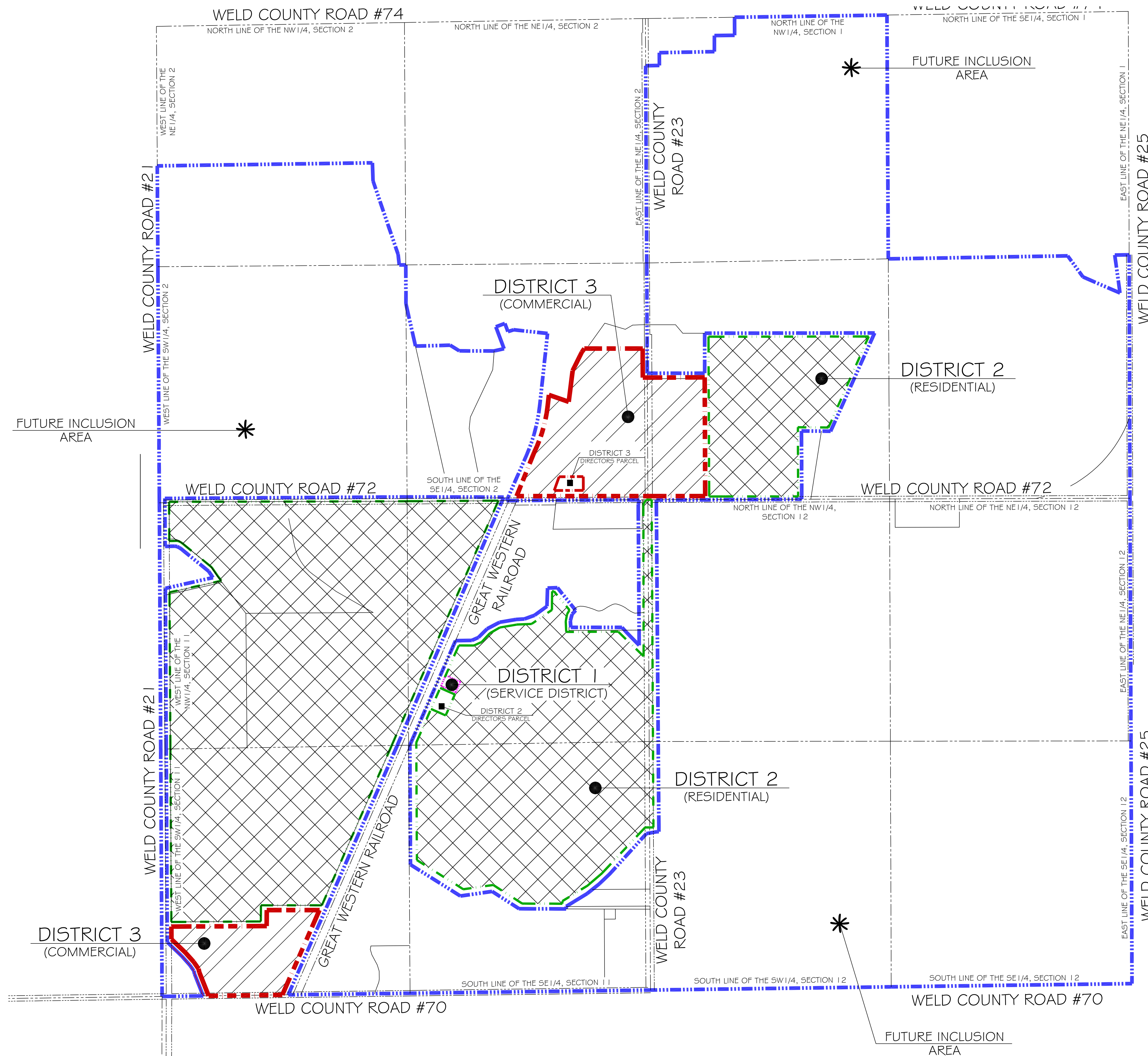


TAILHOLT METROPOLITAN DISTRICT 1-3

BEING PORTIONS OF SECTION 1, SECTION 2, SECTION 11, AND SECTION 12, TOWNSHIP 6 NORTH, RANGE 67 WEST OF THE 6TH P.M.,
COUNTY OF WELD, STATE OF COLORADO



LEGEND

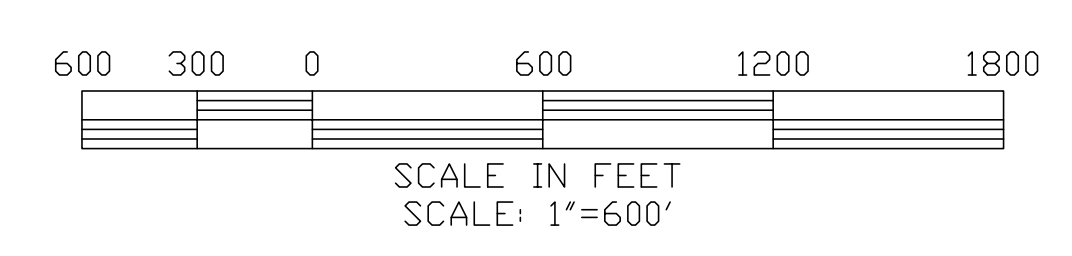
- DISTRICT 1
- DISTRICT 2
- DISTRICT 3
- DISTRICT NUMBER
- DISTRICT NUMBER DIRECTORS PARCEL
- FUTURE INCLUSION AREA

DISTRICT ACREAGES

DISTRICT 1	- 21,875 sq.ft. 0.502 acres
DISTRICT 2	- 21,627,557 sq.ft. 496.501 acres
DISTRICT 3	- 3,534,297 sq.ft. 81.136 acres
FUTURE INCLUSION AREA	- 65,154,880 sq.ft. 1,495.750 acres

TAILHOLT METROPOLITAN DISTRICT 1-3

DISTRICT MAP



DATE:	5/4/2006
FILE NAME:	2006202_MAP1
SCALE:	1"=600'
DRAWN BY:	KRG
CHECKED BY:	SAL

KING SURVEYORS, INC.
650 Garden Drive | Windsor, Colorado 80550
phone: (970) 686-5011 | fax: (970) 686-5821



REVISIONS:	DATE:
REVISE DISTRICT AND MAP STRUCTURE	5-19-06
ADDRESS COMMENTS	5-23-06
REVISE SERVICE/COMMERCIAL DISTRICT	6-23-06
REVISE FUTURE INCLUSION DISTRICT AREA	9-11-06

TAILHOLT METROPOLITAN DISTRICT 1-3
FOR
EVERITT COMPANIES
3030 S. COLLEGE AVENUE, FORT COLLINS, CO 80525
PHONE: (970) 226-1500 FAX: (970) 223-4156

PROJECT #:
2006202

0:\2006202\Map\DISTRICT MAP 1.dwg, 01/3/2006 10:47:42 AM, klyden